

Annex E.2.16

Public

**Corrected Version of
ICC-01/15-4-AnxE.2.16**

VILLAGE DAMAGE ATLAS: FROM KEKHVI TO TSKHINVALI, SOUTH OSSETIA, GEORGIA

Damage Assessment with WorldView-1 & Formosat-2 Satellite Imagery Recorded on 19 August 2008

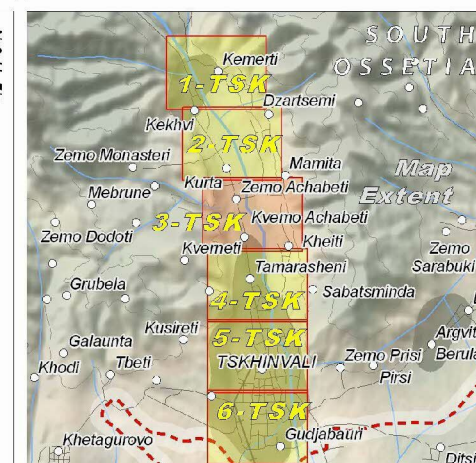
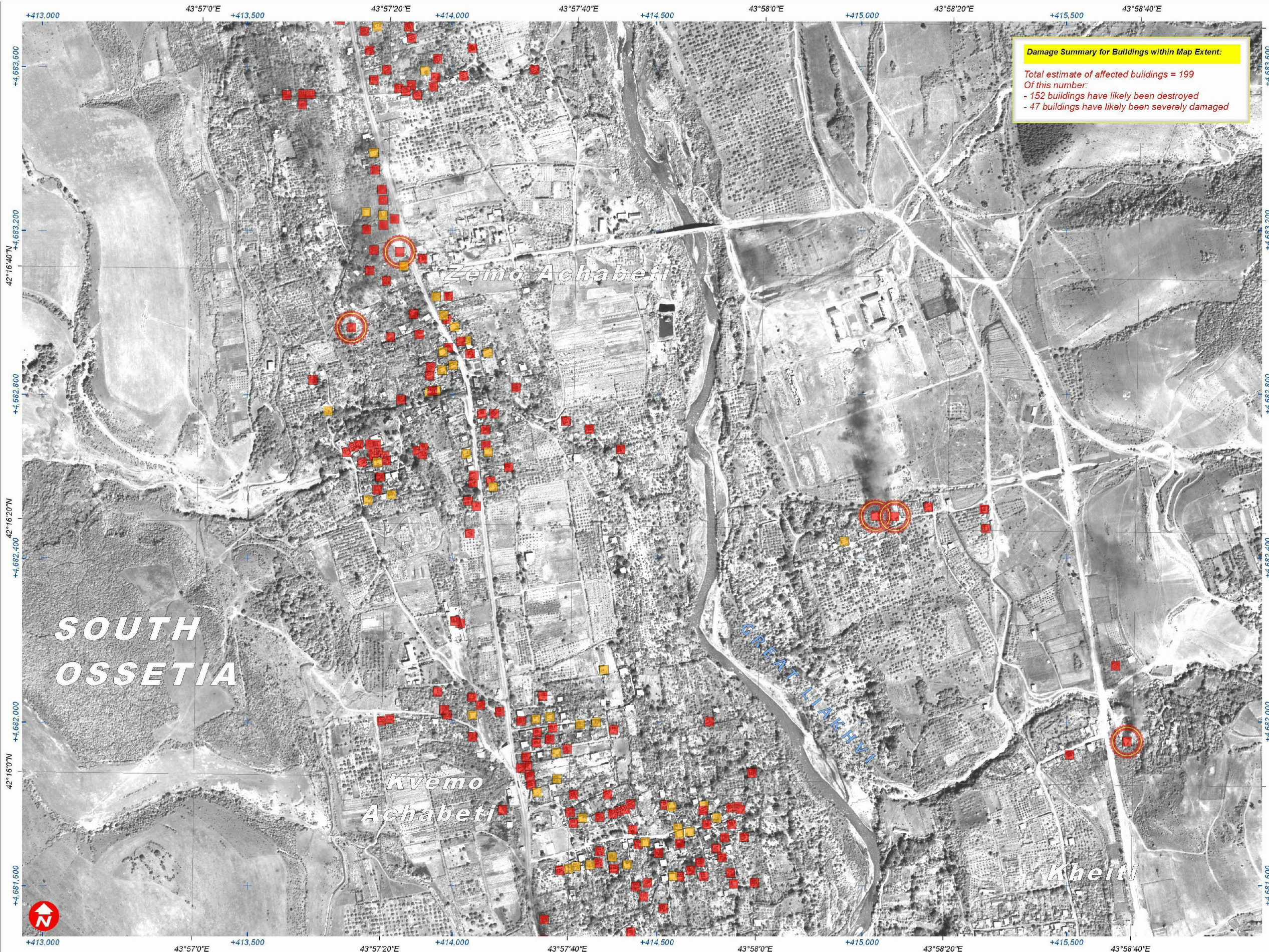
This atlas map presents a satellite-based damage assessment for the affected areas between Kekhvi and Tskhinvali, South Ossetia, Georgia following the armed conflict between Georgian and Russian military forces in August 2008. Damaged buildings have been identified with WorldView-1 and Formosat-2 satellite imagery acquired on 19 August 2008. The estimated number of affected buildings within the mapped extent of this atlas sheet is

described in the damage summary box below. Affected buildings have been classified either as destroyed or severely damaged. An important preliminary finding of this satellite damage analysis is the observed heavy concentration of damages within clearly defined residential areas. Please note, this is an initial damage assessment and has not yet been independently validated on the ground. Please send additions/corrections to UNOSAT.



Fire & Armed Conflict 26 August 2008

ATLAS SHEET: 3-TSK



Map Legend

..... Approximate South Ossetia Boundary

SATELLITE DAMAGE ASSESSMENT

- Building: Likely Destroyed
- Building: Likely Severely Damaged
- Building on fire during sat. image acquisition

SATELLITE IMAGE REFERENCE



Damaged Buildings & Active Fire Industrial Building Area



River & Functional Bridge Minor Road & Cultivated Area

Map Scale for A3: 1:9,250

0	37.5	75	150	225	300	375	450
Meters							
Satellite Data	WorldView-1						
Resolution	50 cm						
Imagery Date	19 August 2008						
Copyright	Digital Globe (2008)						
Source	U.S. Department of State - HIU						
Access Rules	NextView "EULA" - 2008						
Additional Imagery	Formosat-2 (2m pansharpener)						
Imagery Copyright	NSPO 2008						
Imagery Date	19 August 2008						
GIS Data	USGS, UNEP, UNOSAT						
Damage Analysis	UNOSAT						
Projection	Pulkovo 1995 GK Zone 8N						
Datum	Pulkovo 1995						

The depiction and use of boundaries, geographic names and related data shown here are not warranted to be error-free nor do they imply official endorsement or acceptance by the United Nations. This map was produced by the United Nations Institute for Training and Research (UNITAR) Operational Satellite Applications Program (UNOSAT). UNOSAT provides satellite imagery & related geographic information to UN humanitarian & development agencies & their implementing partners.

UNOSAT
satellite solutions for all
Contact Information: info@unosat.org
24/7 Hotline: +41 76 487 4998
www.unosat.org