

# **Annex E.2.15**

## **Public**

**Corrected Version of  
ICC-01/15-4-AnxE.2.15**



# VILLAGE DAMAGE ATLAS: FROM KEKHVI TO TSKHINVALI, SOUTH OSSETIA, GEORGIA

Damage Assessment with WorldView-1 & Formosat-2 Satellite Imagery Recorded on 19 August 2008

This atlas map presents a satellite-based damage assessment for the affected areas between Kekhvi and Tskhinvali, South Ossetia, Georgia following the armed conflict between Georgian and Russian military forces in August 2008. Damaged buildings have been identified with WorldView-1 and Formosat-2 satellite imagery acquired on 19 August 2008. The estimated number of affected buildings within the mapped extent of this atlas sheet is described in the damage summary box below. Affected buildings have been classified either as destroyed or severely damaged. An important preliminary finding of this satellite damage analysis is the observed heavy concentration of damages within clearly defined residential areas. Please note, this is an initial damage assessment and has not yet been independently validated on the ground. Please send additions/corrections to UNOSAT.

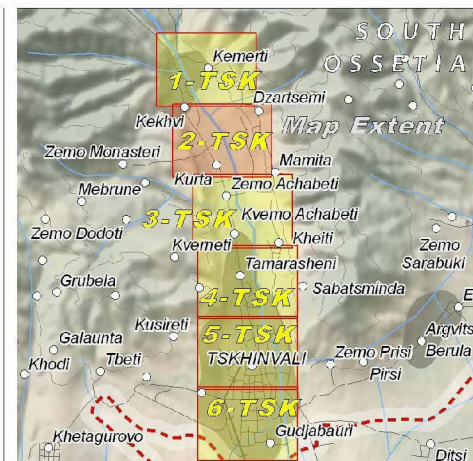
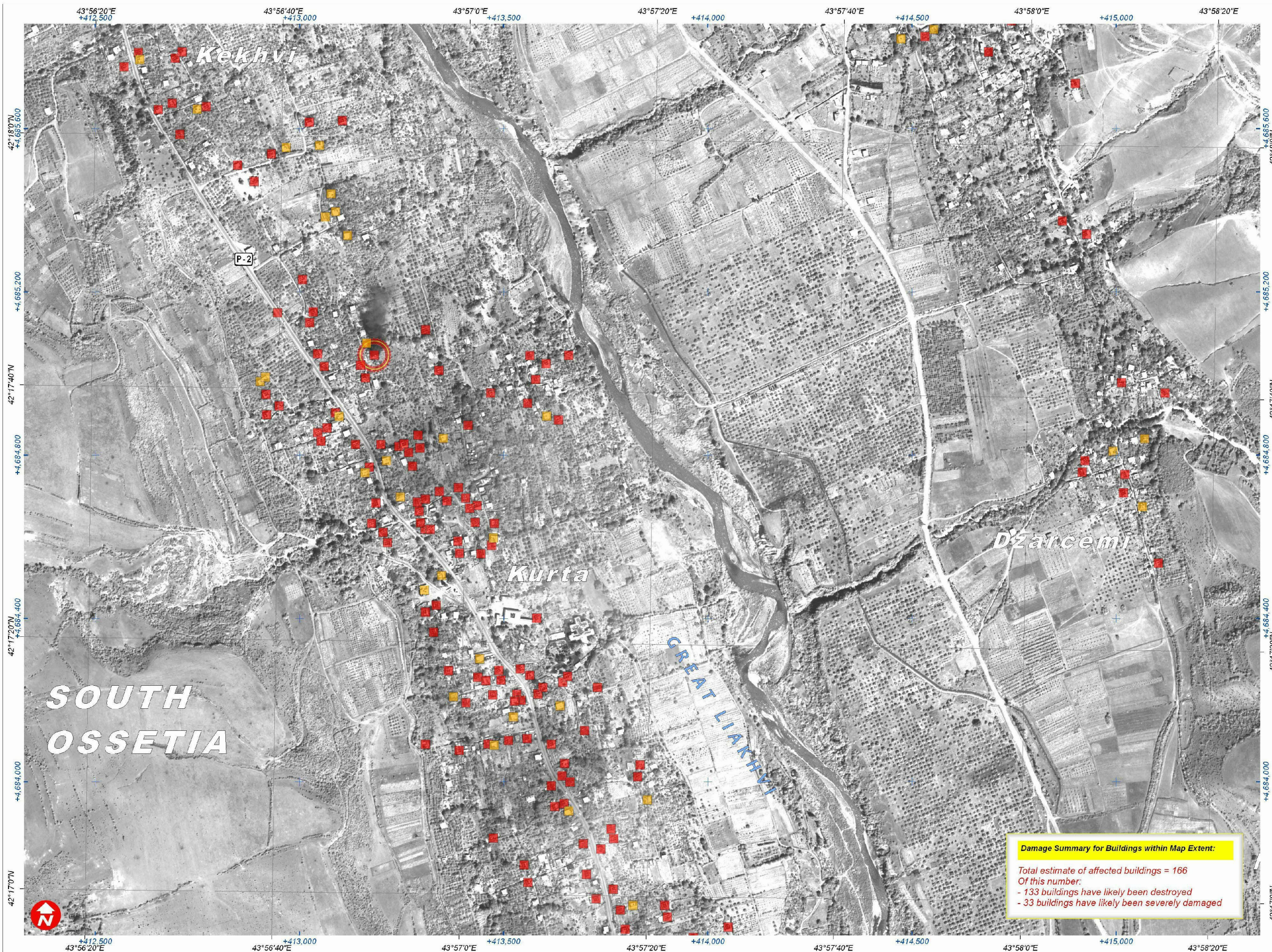


Fire & Armed Conflict 26 August 2008

Conflict



ATLAS  
SHEET:  
2-TSK



## Map Legend

Approximate South Ossetia Boundary

## SATELLITE DAMAGE ASSESSMENT

Building:  
Likely Destroyed  
Building: Likely  
Severely Damaged  
Building on fire during sat. image acquisition

## SATELLITE IMAGE REFERENCE



Damaged Buildings & Active Fire Industrial Building Area  
River & Functional Bridge Minor Road & Cultivated Area

## Map Scale for A3: 1:9,250

0 37.5 75 150 225 300 375 450 Meters  
Satellite Data ..... WorldView-1  
Resolution ..... 50 cm  
Imagery Date ..... 19 August 2008  
Copyright ..... Digital Globe (2008)  
Source ..... U.S. Department of State - HIU  
Access Rules ..... NextView "EULA" - 2008  
Additional Imagery ..... Formosat-2 (2m pansharpened)  
Imagery Copyright ..... NSPO 2008  
Imagery Date ..... 19 August 2008  
GIS Data ..... USGS, UNEP, UNOSAT  
Damage Analysis ..... UNOSAT  
Projection ..... Pulkovo 1995 GK Zone 8N  
Datum ..... Pulkovo 1995

The depiction and use of boundaries, geographic names and related data shown here are not warranted to be error-free nor do they imply official endorsement or acceptance by the United Nations. This map was produced by the United Nations Institute for Training and Research (UNITAR) Operational Satellite Applications Program (UNOSAT). UNOSAT provides satellite imagery & related geographic information to UN humanitarian & development agencies & their implementing partners.

**UNOSAT**  
satellite solutions for all  
Contact Information: [info@unosat.org](mailto:info@unosat.org)  
24/7 Hotline: +41 76 487 4998  
[www.unosat.org](http://www.unosat.org)

## Damage Summary for Buildings within Map Extent:

Total estimate of affected buildings = 166  
Of this number:  
- 133 buildings have likely been destroyed  
- 33 buildings have likely been severely damaged