

# **Annex E.2.12**

## **Public**

**Corrected Version of  
ICC-01/15-4-AnxE.2.12**



# VILLAGE DAMAGE SUMMARY: NIKOZI, GORI DISTRICT, GEORGIA

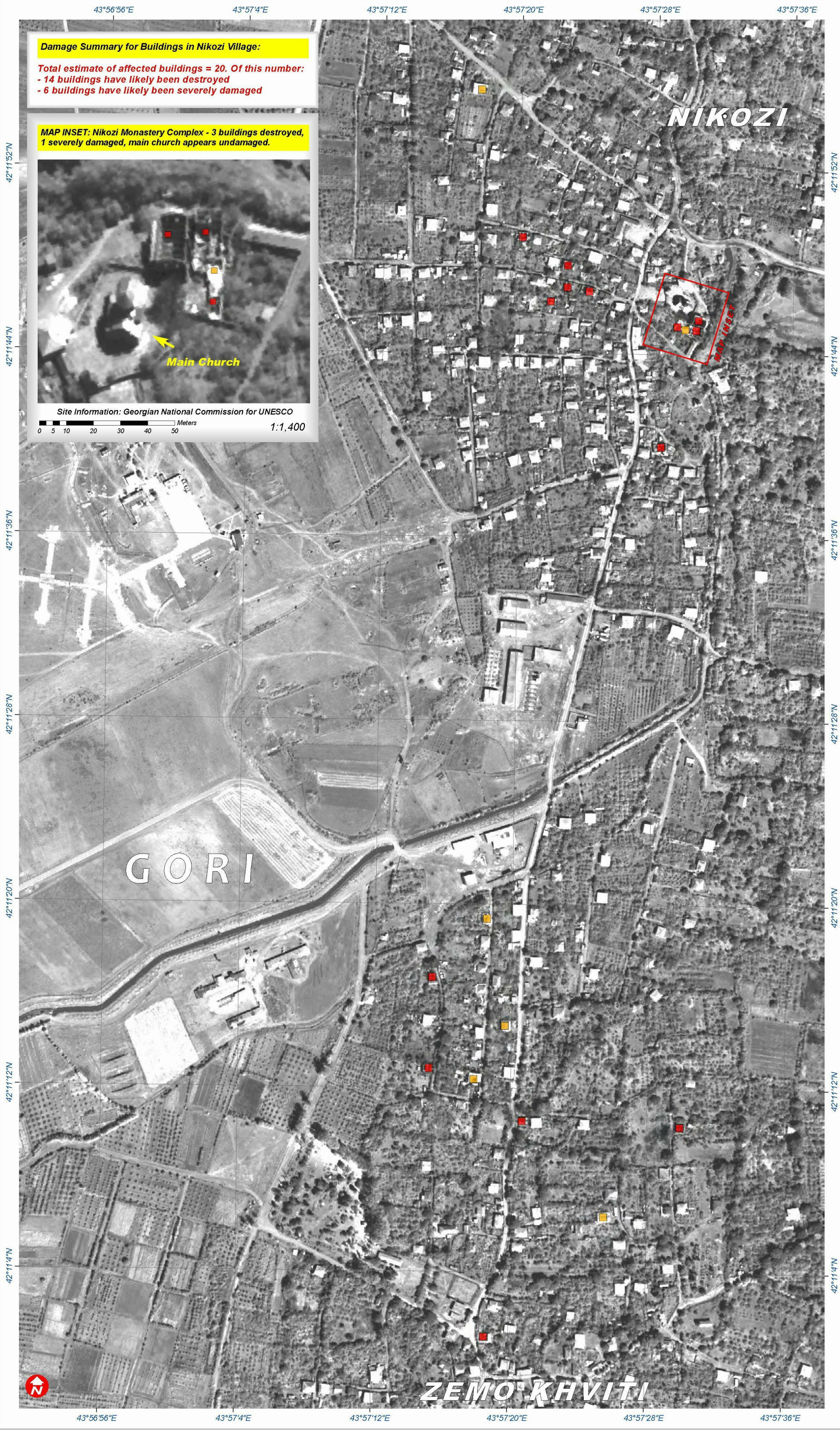
Damage Assessment with WorldView-1 & Formosat-2 Satellite Imagery Recorded on 19 August 2008

Fire & Armed Conflict 10 October 2008



Version 1.0

UNOSAT-2008-000193



Damage Summary for Buildings in Nikozi Village:  
Total estimate of affected buildings = 20. Of this number:  
- 14 buildings have likely been destroyed  
- 6 buildings have likely been severely damaged

MAP INSET: Nikozi Monastery Complex - 3 buildings destroyed, 1 severely damaged, main church appears undamaged.



Site Information: Georgian National Commission for UNESCO  
0 5 10 20 30 40 50 Meters  
1:1,400



## Analysis Description

This map presents a satellite-based damage assessment for the affected village of Nikozi, Gori District, Georgia following the armed conflict between Georgian and Russian military forces, August 2008. Damaged buildings have been identified with WorldView-1 & Formosat-2 satellite imagery acquired on 19 August 2008. Pre-conflict QuickBird imagery in Google Earth was also used.

Affected buildings were classified either as destroyed or severely damaged by standard satellite image interpretation methods. Destroyed buildings have been defined either by the total collapse of the structure or when it was standing but with less than 50% of the roof still intact. Severely damaged buildings were defined as having visible structural damage to a portion of one wall, or where a section of the roof was damaged but with over 50% of the roof still intact.

Buildings not marked in the map were identified as having 'no visible damage'—this does not mean the buildings are undamaged, only that none were identified with the available satellite imagery. Satellite-based assessments can generally identify only a low percentage of buildings with limited damages.

The estimated total number of affected buildings for the selected village is approximately 20. Of this total 14 buildings have likely been destroyed and 6 buildings have likely been severely damaged. An important preliminary finding of this satellite damage analysis is the observed heavy concentration of damages within clearly defined residential areas.

Please note, this is an initial damage assessment and has not yet been independently validated on the ground. Please send any additions or corrections to UNOSAT.

## Map Legend

- Approximate South Ossetia Boundary
- SATELLITE DAMAGE ASSESSMENT**
- Building:
  - Likely Destroyed
  - Building on fire during sat. image acquisition
  - Building: Likely
  - Severely Damaged

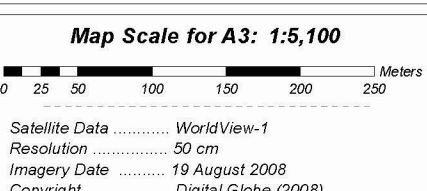
## SATELLITE IMAGE REFERENCE



Damaged Buildings & Active Fire



River & Functional Bridge



Minor Road & Cultivated Area

## Map Scale for A3: 1:5,100

0 25 50 100 150 200 250 Meters

Satellite Data ..... WorldView-1  
Resolution ..... 50 cm  
Imagery Date ..... 19 August 2008  
Copyright ..... Digital Globe (2008)  
Source ..... U.S. Department of State - HIU  
Access Rules ..... NextView "EULA" - 2008  
Additional Imagery ..... Formosat-2 (2m pansharpened)  
Imagery Copyright ..... NSPO 2008  
Imagery Date ..... 19 August 2008  
GIS Data ..... USGS, UNEP, UNOSAT  
Damage Analysis ..... UNOSAT  
Projection ..... Pulkovo 1995 GK Zone 8N  
Datum ..... Pulkovo 1995

The depiction and use of boundaries, geographic names and related data shown here are not warranted to be error-free nor do they imply official endorsement or acceptance by the United Nations. This map was produced by the United Nations Institute for Training and Research (UNITAR) Operational Satellite Applications Program (UNOSAT). UNOSAT provides satellite imagery & related geographic information to UN humanitarian & development agencies & their implementing partners.

**UNOSAT**  
satellite solutions for all  
Contact Information: [info@unosat.org](mailto:info@unosat.org)  
24/7 Hotline: +41 76 487 4998  
[www.unosat.org](http://www.unosat.org)