

Annex E.2.8

Public

**Corrected Version of
ICC-01/15-4-AnxE.2.8**

VILLAGE DAMAGE SUMMARY: DVANI, GORI DISTRICT, GEORGIA

Damage Assessment with WorldView-1 & Formosat-2 Satellite Imagery Recorded on 19 August 2008

This map presents a satellite-based damage assessment for the affected village of Dvani, Gori District, Georgia following the armed conflict between Georgian and Russian military forces, August 2008. Damaged buildings have been identified with WorldView-1 & Formosat-2 satellite imagery acquired on 19 August 2008. Pre-conflict QuickBird imagery in Google Earth was also used. Affected buildings were classified either as destroyed or severely damaged by standard satellite image interpretation methods. Destroyed buildings have been defined either by the total collapse of the structure or when it was standing but with less than 50% of the roof still intact. Severely damaged buildings were defined as having visible structural damage to a portion of one wall, or where a section of the roof was damaged but with over 50% of the roof

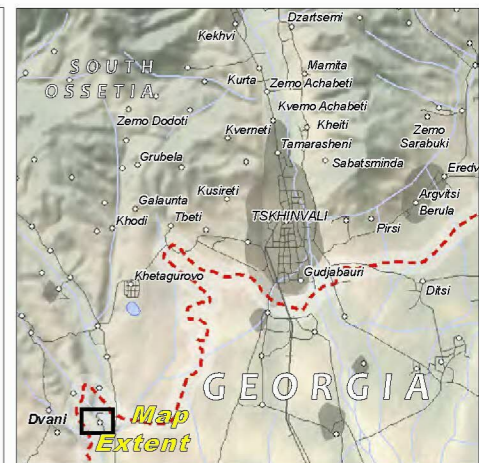
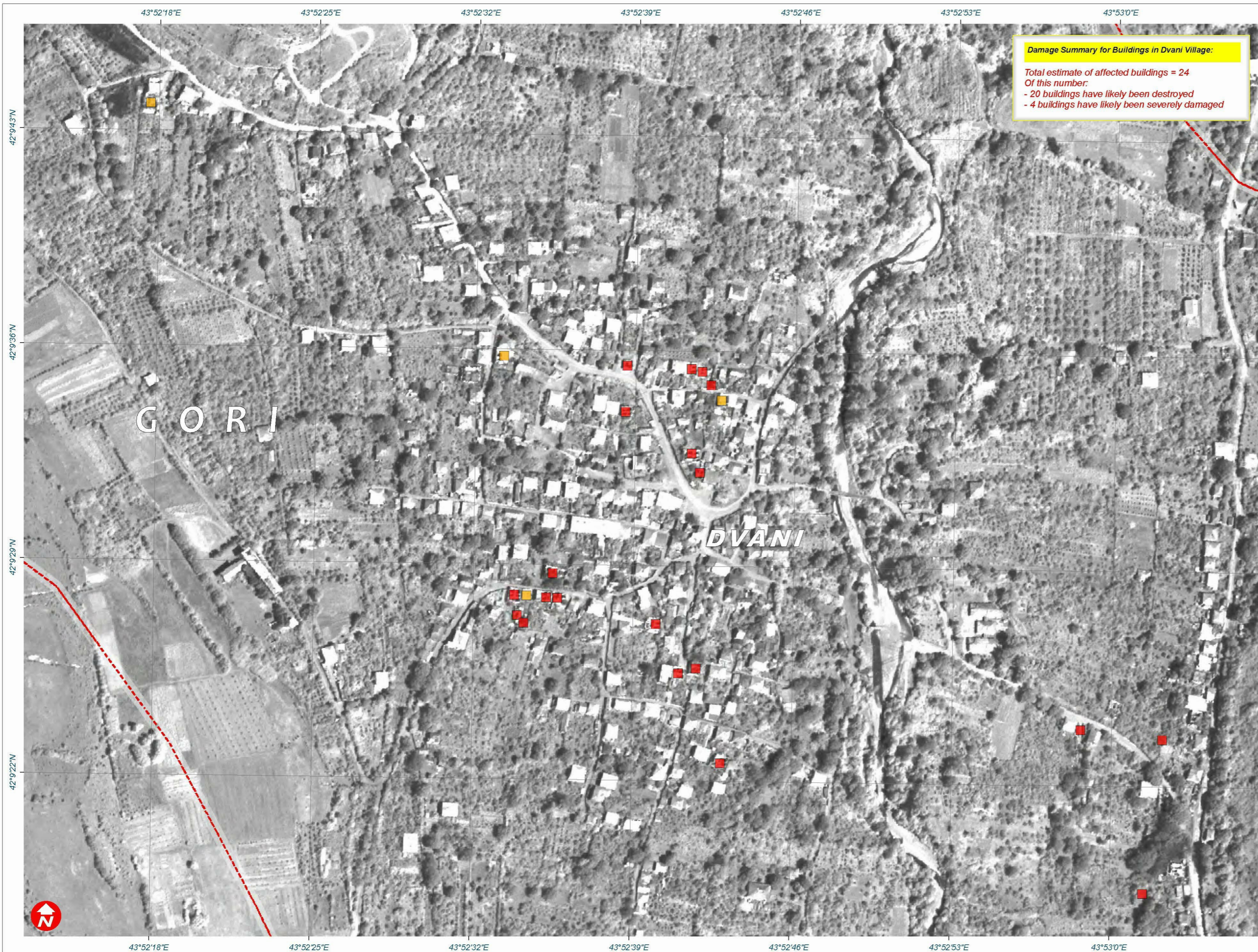
still intact. Buildings not marked in the map were identified as having 'no visible damage'—this does not mean the buildings are undamaged, only that none were identified with the available satellite imagery. Satellite-based assessments can generally identify only a low percentage of buildings with limited damages. The estimated total number of affected buildings for the selected village is approximately 24. Of this total 20 buildings have likely been destroyed and 4 buildings have likely been severely damaged. An important preliminary finding of this satellite damage analysis is the observed heavy concentration of damages within clearly defined residential areas. This is an initial damage assessment and has not yet been independently validated on the ground.

Fire & Armed Conflict 10 October 2008



Version 1.0

UNOSAT-2008-000199



Map Legend

..... Approximate South Ossetia Boundary

SATELLITE DAMAGE ASSESSMENT

Building: Likely Destroyed
Building: Likely Severely Damaged
Building on fire during sat. image acquisition

SATELLITE IMAGE REFERENCE



Damaged Buildings & Active Fire Industrial Building Area



River & Functional Bridge Minor Road & Cultivated Area

Map Scale for A3: 1:3,800

0 12.5 25 50 75 100 125 150 175 Meters
Satellite Data WorldView-1
Resolution 50 cm
Imagery Date 19 August 2008
Copyright Digital Globe (2008)
Source U.S. Department of State - HIU
Access Rules NextView "EULA" - 2008
Additional Imagery Formosat-2 (2m pansharpened)
Imagery Copyright NSPO 2008
Imagery Date 19 August 2008
GIS Data USGS, UNEP, UNOSAT
Damage Analysis UNOSAT
Projection Pulkovo 1995 GK Zone 8N
Datum Pulkovo 1995

The depiction and use of boundaries, geographic names and related data shown here are not warranted to be error-free nor do they imply official endorsement or acceptance by the United Nations. This map was produced by the United Nations Institute for Training and Research (UNITAR) Operational Satellite Applications Program (UNOSAT). UNOSAT provides satellite imagery & related geographic information to UN humanitarian & development agencies & their implementing partners.

UNOSAT
satellite solutions for all
Contact Information: info@unosat.org
24/7 Hotline: +41 76 487 4998
www.unosat.org